

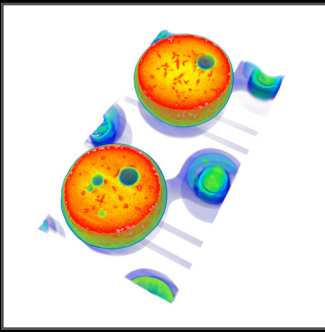


2D Digital X-ray and 3D Computed Tomography

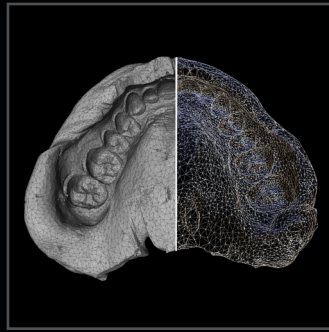


IMAGIX

The Imagix is a universal microCT system designed for the scanning of small objects. The system can handle objects from 0.02" (0.5mm) to 6" (150mm) and perform automatic 3D Computed Tomography reconstruction with state-of-the-art software. With its micron resolution and multiscale capabilities, Imagix is the perfect CT system for laboratories and R & D applications. In addition, Imagix can be used for 2D Digital X-ray inspection. Overall, this system is an affordable solution for high speed Computed Tomography analysis and 3D reverse engineering of small samples.



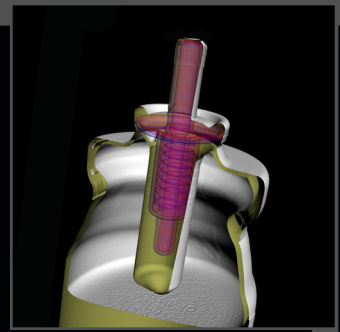
ELECTRONICS



DENTAL



PLASTICS



MEDICAL ASSEMBLIES

SPECIFICATIONS

SYSTEM CAPABILITIES

- Advanced 2D X-ray inspection
- 2D CT Slice reconstruction
- CT volume reconstruction for 3D inspection
- 3D internal and external surface scanning

CT SOFTWARE

- Comprehensive acquisition, processing and archival program with user-friendly interface
- Automated CT calibration software
- Very fast reconstruction software with option for Graphic Card based algorithm.
- Local CT and Limited angle CT reconstruction capabilities
- 3D visualization module with real-time volume rendering, density segmentation, & high performance measurements
- 3D surface model export for CAD compatibility
- Multiple image formats input/output

X-RAY SOURCE

- Micro-focus X-ray tube
- Voltage Range: 10kV – 150 kV
- Focal Spot Size : < 5 microns
- Maximum system resolution: better than 5 microns

X-RAY DETECTOR

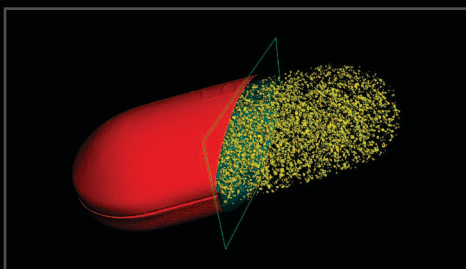
- Digital X-ray detector types: Flat Panel or Image Intensifier
- Detector Size: up to 8" x 10" (20cm x 25cm)

MANIPULATOR

- Maximum Sample Weight: 10 lbs (4.5kg)
- Scan Travel (customization available) :
Focal Distance : 24" (61cm)
Vertical : 7.5" (19cm)
- Rotational stage with high precision
- Optional motion controlled 3 axis

CABINET

- External Dimension: 57" Wide, 30" Deep, 58" Tall (144cm Wide, 75cm Deep, 148cm Tall)
- Cabinet Features: interior lighting, sliding access door, leaded glass viewing window, detached ergonomic console with state of the art computer and large flat panel screen(s), option for data storage and backup solution
- Meets or exceeds all federal and state radiation safety regulations



PHARMACEUTICAL

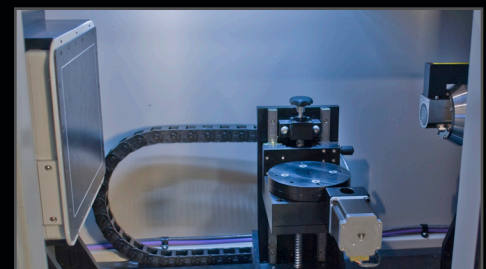
NORTH STAR IMAGING, INC.



PHONE: 1.800.635.8392 or 763.463.5650

FAX: 763.463.5651

EMAIL: SALES@4NSI.COM



INSIDE IMAGIX

VISIT WWW.4NSI.COM OR WWW.XVIEWCT.COM FOR MORE INFORMATION